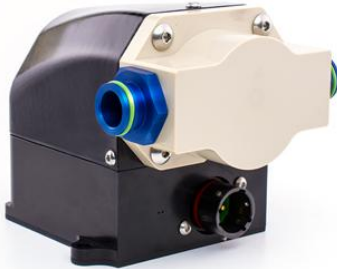


PEEK Pump IFC 1100-3

Article-No.: Z-P 2000 0400



Design	
Weight	750 g
Motor control	Sensored or self-sensing
Hydraulic power	1100 l/h at 3 bar
Voltage range	9-60 VDC
Motor	BLDC

Main Characteristics

Electrically powered high-performance pump for water circuits or circuits with dielectric media. Equipped with a BLDC motor and intelligent control electronics (using IFC, Intelligent Flow Control).

Intelligent performance control depending on load status, processor temperature and ambient/medium temperature

Performance data at 50°C medium water/glycol and 50°C ambient temperature: 1100 l/h at 3 bar.

Function

Pump: Displacement pump (gerotor)

Motor: BLDC, external rotor

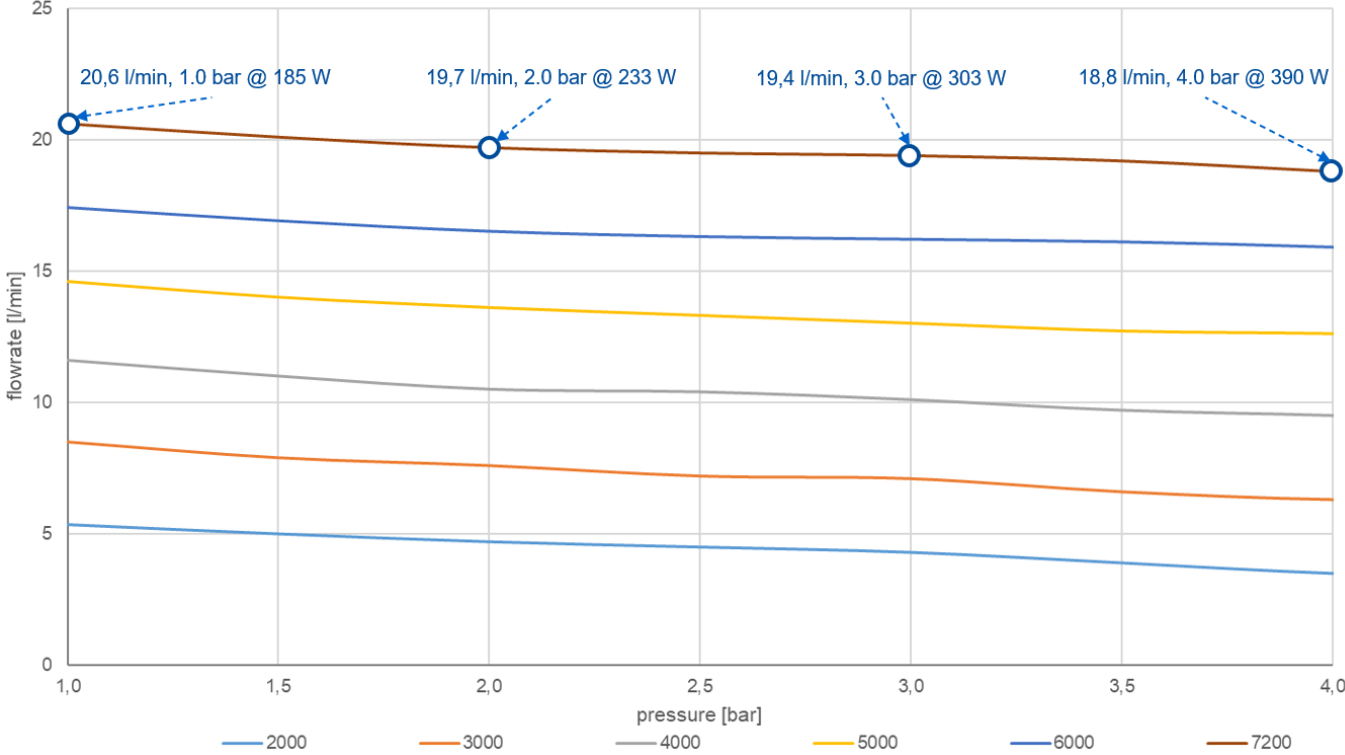
Control electronics: Customer-specific interfaces (CAN, LIN, UART, etc.) available, alternatively, ON/OFF

Software: To integrate our product into the CAN vehicle architecture, we automatically supply the DBC-file if required

Dimensions and Connections

- Length: 117 mm
- Width: 92 mm
- Height: 89 mm
- Hydraulic connections: -08 Wiggins tube connectors (other connections, e.g. JIC available)
- Electric connection: 8STA0 12-26 PN, on vehicle side 8STA6 12-26 SN
- Mounting: 3 M5 screws

Measurements – Operating Points



Medium: Water/Glycol